



# Te Haonga Mai

ISSUE 14 AUGUST 2009



E RERE KAU MAI  
TE AWANUI  
MAI I TE KAHUI  
MAUNGA KI  
TANGAROA  
KO AU TE AWA  
KO TE AWA KO AU

*"Nga mangaiti e hono kau ana, kia tuputupu, kia puta hei Awa Tupua"*

Kaati, kautau ra nga mata morehurehu o te nui kua riro, he muka kautau na te taura i whiriwhiria kia kukume mai ai taatau kia hoki mai ai taatau ki nga waiinu a Ruatipua, ki te Awa-nui e. Nau mai, haere atu ra.....

## INSIDE THIS ISSUE

- River Claim Update
- Fisheries Restoration Project
- Whanganui River Rural Housing Programme
- Rangatahi Summit 2009
- He Korero Ano - Whanganui Iwi Registration - Education Grants

## River Claim Update

The terms of negotiations for the River Claim - signed on the 6 March 2003 by Margaret Wilson and the Labour led Government - seem but a distant memory. At first negotiations made steady progress. However the Whanganui Iwi negotiation position was outside the Treaty Settlements Policy of that Government and the key negotiation points were blocked by Cabinet in 2005.

Frustrated by a lack of attention by the Crown to the Whanganui River Claim, the Iwi called a Runanga o Te Awa Tupua at Kaiwhaiki Marae on the 10th of August 2008. At this Runanga Te Atawhai Archie Tairaoa and Rangitihia Tahuparae were asked lead the Claim Negotiations to a conclusion. Unfortunately Rangitihia passed away in October 2008 leaving Sir Archie to lead discussions with the Crown. In this role he is currently being supported by a small team of technicians along with the Awa Tupua Negotiation Team who provide advice and an ongoing communication link back to the Iwi through the Tupuna Rohe.

In September of this year the National led Government agreed to negotiate the settlement outline that Sir Archie and his support team has developed. This outline states that the settlement detail to be negotiated must be consistent with the Iwi ethos :

*Te Mana o te Awa*

*Te Mana o te Iwi*

*Giving expression to the Mana of the River through the Mana of an efficient, organised and well resourced , self determining Iwi. A key component of this approach will be the negotiation of new category of legal title to the River —a unique Awa Tupua Title— which will give ownership of the River back to itself and compel all to work in its best interests. In order to keep you informed and provide an opportunity for you to feed into the River Claim process we will be commencing Bi-Monthly River Claim Hui. These will be advertised on the Trust Board Website on and Awa FM, so stay tuned.*

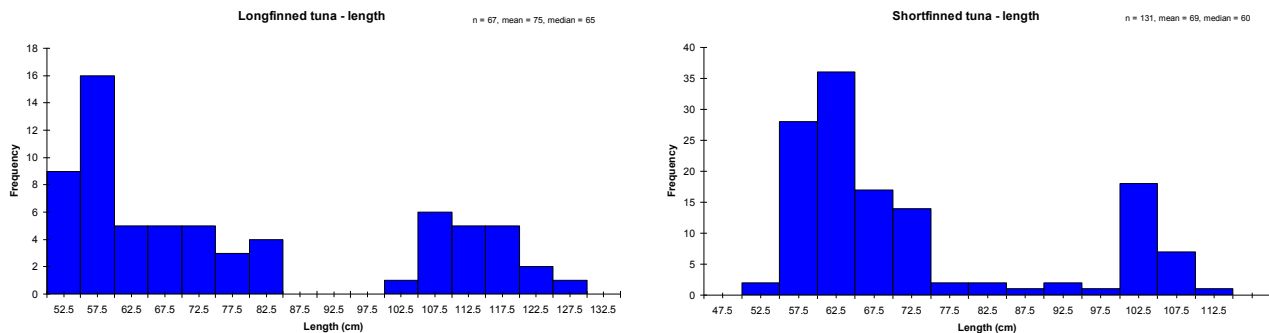
Whanganui

River Maori Trust Board PO Box 323, 61 Taupo Quay, WHANGANUI.



# Fisheries Restoration Project

From 3 September 2007 to 31 August 2008 Ben Potaka our Kaiwharite undertook a pilot study on the Revitalisation of traditional fisheries management research project. 627 tuna were captured during the research project, 322 were longfin and 305 were shortfin. The mean length for longfins was approximately 75cm and mean weight was approximately 1520g. The mean length for shortfins was approximately 69cm and mean weight was approximately 1061g.



The study observed a decline in size and number of tuna within our mahinga kai this may be due to a combination of anthropogenic effects, such as:

- The Whanganui River no longer flows to the same rhythm because hydro-power schemes have diverted the flow of water at 18 locations on the River in order to generate renewable "sustainable" power. The obvious impacts of the diversions are:
  - obstruction to the downstream migration of adult tuna (reducing breeding capacity)
  - obstruction to the upstream migration of juvenile tuna (limiting recruitment to areas below diversions)
  - reduction in the amount of water in the River at any given time (increasing mortality during summer months when water levels are naturally low)
- Erosion, a result of significant deforestation along parts of the River to provide for agriculture and forestry, reduces water quality and alters preferred tuna habitat. Erosion may also have an adverse effect on potential food sources of tuna.
- Pollution and destruction of habitat from gravel mining operations and agricultural development may have an adverse effect on the health of tuna as well as impacting potential food sources of tuna.
- Introduced exotic species like trout compete for the preferred food source of tuna

Commercial fishing has reduced the number and size of tuna, and is still permitted in the tidal zone of the Whanganui River however no commercial operators currently fish here. The results of this study suggest the frequency of large tuna – particularly longfinned tuna – has decreased drastically. Mean lengths and weights recorded in this pilot study for longfinned tuna (75cm and 1520g respectively) and shortfinned tuna (69cm and 1061g respectively) are notably less than the average sizes derived from anecdotal evidence.

This research provided a good start to understanding our Tuna resource in the 21st century. This year we want to extend our Customary Fishing programme to include workshops on our traditional fishing practices which will include onshore and offshore fishing excursions in order to teach skills and practice handed down by our Tipuna. These will be advertised through Awa FM and Te Haonga Mai in the coming editions.

Whanganui River Maori Trust Board PO Box 323, 61 Taupo Quay, WHANGANUI.  
Phone: (06) 345 8160, Fax: (06) 345 0472, Email: wrmtb@wrmtb.co.nz, Web: www.wrmtb.co.nz

# Whanganui River Rural Housing Programme

Early in 2008 Housing New Zealand approached the Whanganui River Maori Trust Board in relation to the housing needs of the Whanganui River.

The Trust Board in conjunction with Housing New Zealand sought to survey the state of housing along the Whanganui River communities of Parikino, Koriniti, Matahiwi, Ranana, Hiruharama and Pipiriki in order to identify House Health and Safety needs.

At the time fifty one (51) whānau households participated in this survey through the six community meetings that were held from 29 April 2008 to 12 May 2008.

The data from this survey showed that households faced immediate threats to their safety in terms of Heating, Lighting, Cooking, Water and Waste Management systems.

This data assisted the Trust Board to prove a housing need existed on the Whanganui River and helped the Board gain Housing New Zealand's Rural Housing Programme. The purpose of the Programme is to eliminate unsafe and substandard rural housing in areas of identified high housing need, by developing and implementing strategies to address housing and wider social issues faced by whānau living in these rural locations.

In 2008 the Trust Board worked alongside Housing New Zealand to complete 22 Housing Repairs in 2009 a further 18 homes will be completed.

Raylene McKenzie is the coordinator of this programme. Raylene conducted the initial housing needs assessment with the whānau and has worked with the eligible whānau to progress the House Assessment and develop the Business Case. Ngā mihi kia koe Raylene.



The programme includes emergency repairs particularly as it pertains to Health and Safety matters in the home.

All of the participants are required to attend a Home Maintenance Workshop at the

end of the year to assist them maintaining their home.



Here are some of the whānau working at away at the home maintenance workshop.



# Rangatahi Summit 09

This year the Rangatahi summit saw 60 rangatahi participate in the Annual event. Coordinated by Sheena Maru this event aims to build stronger relationships between our Rangatahi who live in the city and our Rangatahi who live around the base of our Maunga.

It also aims to build a stronger relationship and understanding of our Rangatahi and their Whanganui-tanga. This particular summit focuses on Matua te Mana and our relationship with our Tipuna Maunga Ruapehu. The Rangatahi learn all about the wahi around the base of the Maunga and for one of the days they learn to ski and play with respect on their Maunga. Here are some photos of the Rangatahi participating in whakawhanaungatanga.



# He korero ano

## Iwi Registrations

Whanau if you still haven't registered as a Whanganui Iwi you can go on our website [www.wrmtb.co.nz](http://www.wrmtb.co.nz) and download an Iwi Registration Form. All the glitches with the website should be ironed out if you still have problems you can email [wrmtb@wrmtb.co.nz](mailto:wrmtb@wrmtb.co.nz) or phone 063458160 or text 0272527090.

## Study Grants for Secondary or Tertiary Study

The Trust Board does not have any facility to provide grants. The only tribal grant schemes for study are through the following land incorporations:

**Whanganui Trust** enquiries (and applications) should be addressed to:

**The Secretary**

The Whanganui Trust  
PO Box 4035  
Whanganui. 4500  
Tel: 06 348 7213

Email: [grants@whanganuitrust.com](mailto:grants@whanganuitrust.com)

Whanganui Trust Grants are available to beneficiaries and descendents of Morikaunui Incorporation only.

**Ngaporo Waimarino Forrest Trust** enquiries (and applications) should be addressed to

The Secretary  
PO Box 282  
Whanganui 4540

<http://www.ngaporowaimarino.maori.nz/docs/Education.pdf>

Whanganui River Maori Trust Board PO Box 323, 61 Taupo Quay, WHANGANUI.  
Phone: (06) 345 8160, Fax: (06) 345 0472, Email: [wrmtb@wrmtb.co.nz](mailto:wrmtb@wrmtb.co.nz), Web: [www.wrmtb.co.nz](http://www.wrmtb.co.nz)